

4- Ever Kidz Fashion Pack

393450

ADULT SUPERVISION RECOMMENDED

Age 4+ years

WARNING:
CHOKING HAZARD—Small parts.
Not for children under 3 years.

QUICK START

Follow these simple instructions to dress your 4-Ever Kidz™ doll in funky new looks:

NOTE:

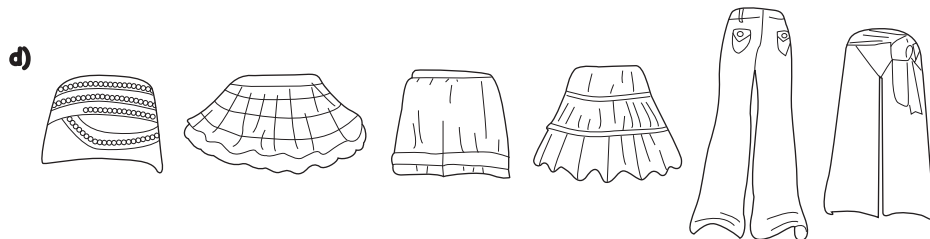
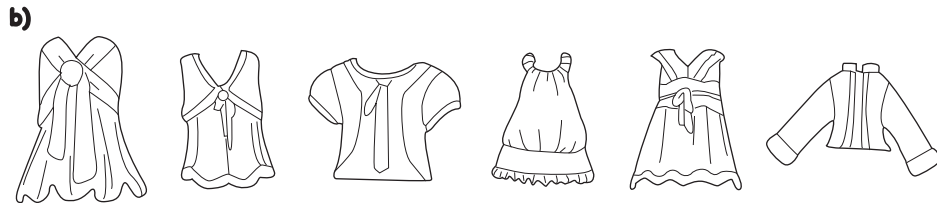
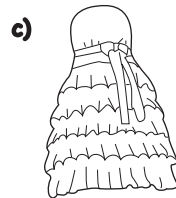
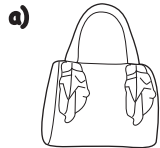
- 4-Ever Kidz™ snap-on fashions are exclusively designed to fit snap-on 4-Ever Kidz™ dolls only.
- When dressing your doll, always put the Bottom on before putting on the Top for best fit.
- Some Tops may not fit over some Bottoms.
- 4-Ever Kidz™ doll is not included in this item.

INTRODUCTION

Snap-on the style with a jam-packed 4-Ever Kidz™ fashion pack! Find tons of cool new looks that you can create in a snap!

CONTENTS

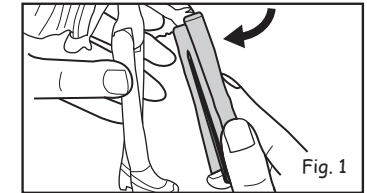
- a) 1 Purse b) 6 Tops c) 1 Dress
d) 6 Bottoms e) 1 Robe (Top)



Illustrations may vary from actual contents.

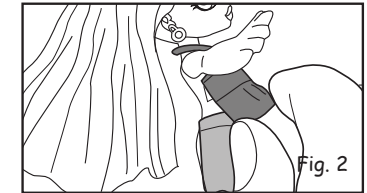
BOTTOM

With both legs together, line the Bottom's tabs with the slots on the doll's waist and press it into place. (Fig. 1)



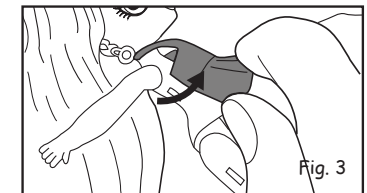
Top / Dress

Making sure that the doll's arms are up and her legs are together, align the tabs with the small slots on the doll's body, and press the clothing into place. (Fig. 2)



REMOVING THE OUTFIT

Always undress your doll by removing the Top first. Remove each clothing piece by lifting up on one side to pull the tab out of the slot. (Fig. 3)



Please keep this manual as it contains important information.



0309-0-E/INT

www.mgae.com
© MGA Entertainment, Inc.
4-EVER BEST FRIENDS®, 4-EVER KIDZ™,
4-EVER LIL' ANGELZ™ are trademarks of
MGA in the U.S. and other countries. All
logos, names, characters, likenesses,
images, slogans, and packaging appearance
are the property of MGA.
16300 Roscoe Blvd.
Van Nuys, CA 91406 U.S.A.
(800) 222-4685
Printed in China

The preferred method of contact for
Customer Service is through our e-mail
contact form at www.mgae.com.

