

## FCC COMPLIANCE

NOTE: This equipment has been tested and found to comply with the limits for Class B digital device, pursuant to Part 15 of FCC Rules. These limits are designed to provide reasonable protection against harmful interference in a residential installation. This equipment generates, uses and can radiate radio frequency energy and, if not installed and used in accordance with the instructions, may cause harmful interference to radio communications. However, there is no guarantee that interference will not occur in a particular installation. If this equipment does cause harmful interference to radio or television reception, which can be determined by turning the equipment off and on, the user is encouraged to try to correct the interference by one or more of the following measures:

- Reorient or relocate the receiving antenna.
- Increase the separation between the equipment and receiver.
- Connect the equipment into an outlet on a circuit different from that to which the receiver is connected.
- Consult the dealer or an experienced radio/TV technician for help.

This device complies with Part 15 of the FCC Rules. Operation is subject to the following two conditions: (1) This device may not cause harmful interference, and (2) this device must accept any interference received, including interference that may cause undesired operation.

Warning: Changes or modifications to this unit not expressly approved by the party responsible for compliance could void the user's authority to operate the equipment.

## SAFE BATTERY USAGE

- Use alkaline batteries for best performance and longer life.
- Use only the type battery recommended for the unit.
- Batteries should be replaced only by an adult.
- Insert batteries with the correct polarity (+ and -).
- Do not mix old and new batteries.
- Do not mix alkaline, standard (carbon-zinc), or rechargeable (nickel-cadmium) batteries.
- Do not short-circuit batteries.
- When not used for an extended time, remove batteries to prevent possible leakage and damage to the unit.
- Do not mix rechargeable and non-rechargeable batteries.
- Rechargeable batteries are to be removed from the toy before charging.
- Rechargeable batteries are to be recharged only under adult supervision.
- Do not recharge non-rechargeable batteries.
- Exhausted batteries are to be removed from the toy.
- Do not dispose of batteries in fire as they may leak or explode.

NOTE: The voltage of a fully-charged, rechargeable battery is often lower than that of a fresh alkaline battery. Therefore, it is recommended that alkaline batteries be used instead of rechargeable batteries for best performance and for longest play time.



'Let's care for the environment!' The wheelie bin symbol indicates that the product must not be disposed of with other household waste. Please use designated collection points or recycling facilities when disposing of the item. Do not treat old batteries as household waste. Take them to a designated recycling facility.

Please keep this manual as it contains important information.



0409-0-E

www.moxiegirlz.com  
© MGA Entertainment, Inc.  
MOXIE GIRLZ™ is a trademark of MGA in the U.S. and other countries. All logos, names, characters, likenesses, images, slogans, and packaging appearance are the property of MGA.  
16300 Roscoe Blvd.  
Van Nuys, CA 91406 U.S.A.  
(800) 222-4685  
Printed in China

The preferred method of contact for Customer Service is through our e-mail contact form at [www.mgae.com](http://www.mgae.com)



# Moxie Girlz™ Art-titude™ RC Vehicle

Age 6+ years

**WARNING:**  
CHOKING HAZARD—Small parts.  
Not for children under 3 years.

Item No.: 393238

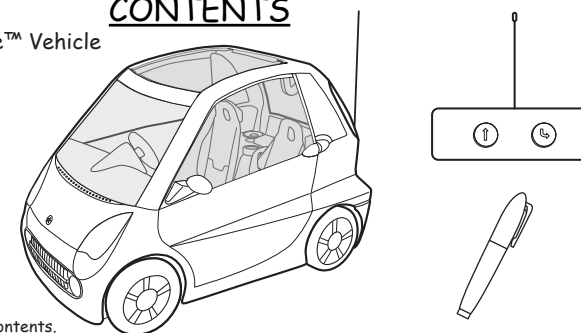
Adult Battery Installation Required

## INTRODUCTION

This trendy, urban, hybrid-style RC Vehicle is not only cool, it's got the Moxie Girlz™ Art-titude™! Take your dolls for a ride in a vehicle with style and flair!

## CONTENTS

- 1 Moxie Girlz™ Art-titude™ Vehicle
- 1 Remote Control
- 1 Marker



Illustrations may vary from actual contents.

## BEFORE YOU BEGIN

An adult must install batteries in the Vehicle. Here's how:  
**VEHICLE**

1. Switch the ON/OFF switch to "OFF" then, using a Phillips screwdriver (not included) remove the screw and battery compartment cover located on the bottom of the Vehicle. (Fig.1)
2. Install four (4) AA alkaline batteries (not included) making sure the (+) and (-) ends face the proper direction as indicated inside the battery compartment.
3. Replace the compartment cover and tighten the screw.

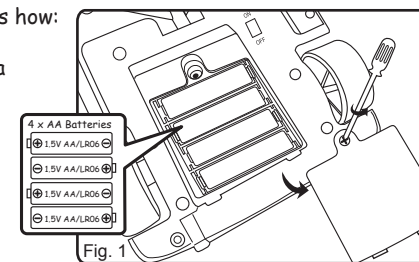


Fig. 1

## REMOTE CONTROL

An adult must install batteries in the remote control. Here's how:

1. Switch the ON/OFF switch to "OFF" then, using a Phillips screwdriver (not included) remove the screw and battery compartment cover on the back of the Remote Control. (Fig.2)
2. Install two (2) AAA alkaline batteries (not included) making sure the (+) and (-) ends face the proper direction as indicated inside the battery compartment. (Fig.2)
3. Replace the compartment cover and tighten the screw.

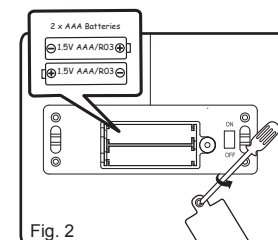


Fig. 2

## QUICK START

Before going for a drive, make sure that your dolls (not included) are in place and buckled up:

1. Remove the sunroof from the Vehicle. (Fig. 3)
2. Lift the doll's arms straight up.
3. Place the doll in the driver or passenger seat.
4. Bring the seat belt down around the front of the doll's chest and secure it to the slot. (Fig. 4)
5. Once the doll is in the seat and the seatbelt is fastened, bring the doll's arms down.
6. Replace the roof.

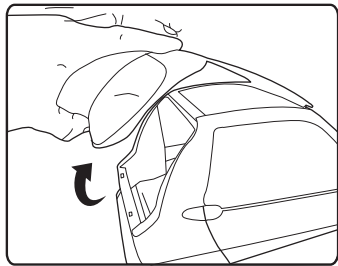


Fig. 3

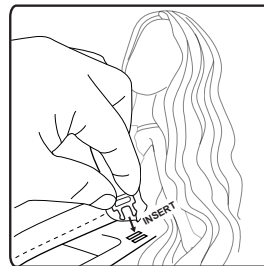


Fig. 4

## OPERATING THE VEHICLE

1. Slide the Vehicle ON/OFF switch on the bottom of the Vehicle to the "ON" position.
2. Slide the ON/OFF switch on the back of the Remote to the "ON" position.
3. Place the Vehicle on a flat surface.
4. Straighten the Antenna.
5. Use the Remote Control to drive your Vehicle by doing the following:
  - a. Press the left button of the Remote Control to go forward. (Fig. 5)
  - b. Press the right button of the Remote Control to back up and turn to the right. (Fig. 6)

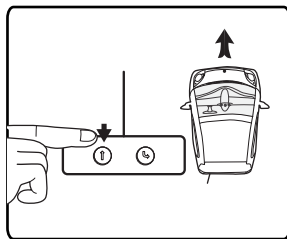


Fig. 5

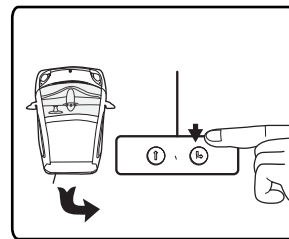


Fig. 6

## ADDING ART-TITUDE™ TO YOUR VEHICLE

To add color and style to your Vehicle:

- Use the included marker or markers from any of your other Art-titude™ products to color in the designs on the car.

## IMPORTANT NOTES

- DO NOT USE MARKERS OTHER THAN THOSE INCLUDED WITH THIS PRODUCT on items in this playset as other markers may be permanent and may not be removable.
- Use Markers included in this playset only on items in this playset and not on fabrics, furniture, people, etc.
- Recap markers after using and DO NOT leave markers in the sun or in very hot areas.
- Wash your hands and all accessories thoroughly after playing with markers.
- Never use the Airbrush to spray color on your own face or other people's faces.
- Keep markers away from eyes. In case of contact with eyes, rinse immediately with plenty of water and seek medical advice.
- Color must be allowed to dry between steps to prevent smearing and to prevent color from being transferred to skin, other fabrics, furniture, etc.
- Protect or cover your work space before using Markers to prevent workspace damage.
- Keep Markers away from food preparation and consumption areas.
- Marker color left on items in this playset may not be completely removable.
- Remove Marker color by using a "Vinyl Drafting Eraser" (not included). DO NOT use cleaners, abrasives, or other harsh chemicals. Some color may remain, especially if item has set overnight before erasing.

## IMPORTANT INFORMATION

- When driving two RC Vehicles, they must be of different radio frequencies (e.g. one vehicle 49MHz and one vehicle 27MHz) or they may not perform as designed.
- When Vehicle is not being played with, turn the ON/OFF switches on both the Vehicle and Remote "OFF" to save battery power.
- Your Vehicle is controlled by radio frequency. It may interfere with nearby devices such as cordless phones, hair dryers, radios, walkie-talkies, or other radio controlled devices. If this occurs, move the Vehicle to a location away from the interference.
- The Vehicle must remain in remote control range to operate correctly. The range depends on the surrounding area and on the strength of the battery. Obstructions such as buildings, fences, etc., between the remote control transmitter and the Vehicle, reduce the range.
- If the Vehicle runs slowly, replace the batteries.
- KEEP AWAY FROM WATER! Do not run your Vehicle through puddles, or expose to liquid of any kind as moisture may damage the unit.

## TROUBLE SHOOTING

IF THERE IS NO FUNCTION BETWEEN THE REMOTE CONTROL AND THE VEHICLE:

- Make sure the Remote Control and the Vehicle switches are in the "ON" position.
- Make sure the batteries are inserted properly.
- Replace the old batteries with new alkaline batteries.
- Move the Remote Control closer to the Vehicle to determine the best communication between the two.

### ⚠ CAUTION:

- DO NOT sit or stand on any part of the Vehicle.
- DO NOT lift and/or drop the Vehicle as doing so may cause bodily injury to the user and irreparable damage to the Vehicle.
- Play with the Vehicle on the floor or ground only.
- DO NOT operate this vehicle during thunderstorms.
- Keep hair, fingers, loose clothing and other items away from rotating wheels of the unit.

## ONLINE GAME ACCESS

YOUR SECRET GAME CODE IS F47H31

To access the game, you must create a user account at [moxiegirlz.com](http://moxiegirlz.com). Be sure to ask your parent or guardian's permission before registering online for a [moxiegirlz.com](http://moxiegirlz.com) account! NOTE: [moxiegirlz.com](http://moxiegirlz.com) requires a PC or Mac with a broadband (DSL, Cable, LAN) internet connection and screen resolution of at least 1024x768 at "millions of colors." For complete system requirements and website Terms & Conditions please visit [Moxiegirlz.com](http://Moxiegirlz.com).